

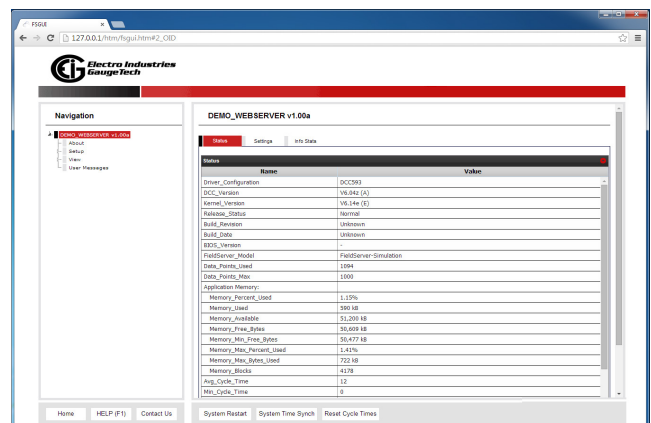
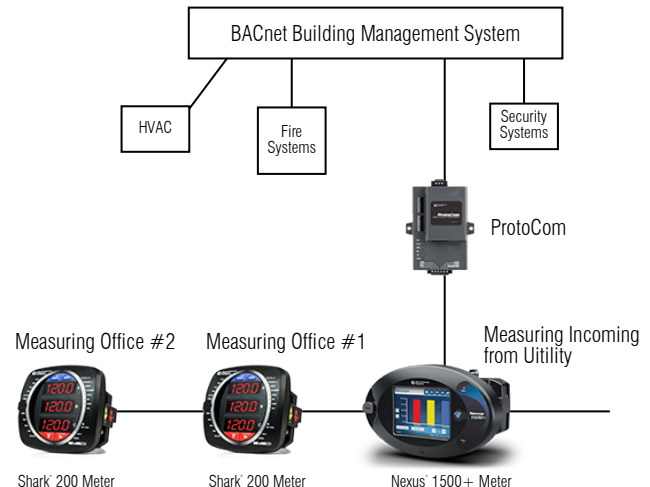
ProtoCom Protocol Gateway

Easily Convert Shark® or Nexus® Meters to BACnet® and LonWorks®



The ProtoCom is a one-stop solution to building automation. It allows any integrator to easily provide power metering data to any building automation system (BAS) that uses BACnet® or LonWorks® protocols. Using this converter, a user can quickly and easily convert power metering data from Electro Industries (EI)®'s native Modbus® protocol to the desired format, without complex integration.*

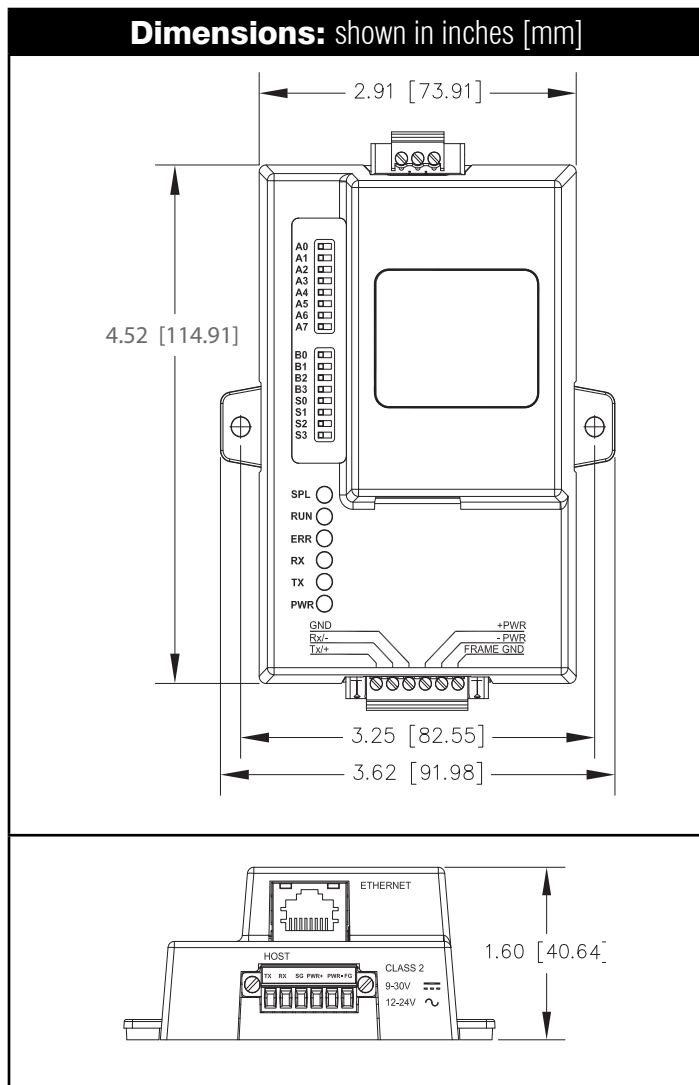
- Plug and Play – Connects to Meter's RS485 Port with Almost No User Configuration
- Auto-discovery Detects the Connected Meter and Maps Appropriate BACnet® or Lon Works® Points Automatically
- Enables BACnet MS/TP, BACnet/IP, LonWorks®, and other Popular Building Management Systems
- Perfect Add-on for Any Building Management Solution
- Retrofits to Existing Meters, Saving Installation Time and Money



System setup and configuration is easily accomplished using the built-in graphical user interface. There is no need for client setup software. All settings can be password protected from tampering. The ProtoCom converter is ideal for developing a comprehensive building management and LEED initiative.

One ProtoCom can accept multiple connections to multiple types of supported EIG meters. Supported meters include:

- Shark® 100, Shark® 100S, Shark® 200, Shark® 200S, Shark® 250, Shark® 270 Meters
- Shark® Meter in Enclosure
- MP200-Y/MP200-S Metering System
- MP200 Metering System in Enclosure
- Nexus® 1252, Nexus® 1262, Nexus® 1272, Nexus® 1450/1500/1500+ Meters
- DMMS 425 Meter
- PQMII Meter



Ordering Information

Product	Part No.
ProtoCom-KT	*ProtoCom-Lon-Kit
ProtoCom-Lon-KT	*ProtoCom-Lon-Kit

*Kits include the Converter, a 3 foot RS485 cable and a 120/220 V to 24 V DC Power Supply.



The protocols available for each converter are:

- ProtoCom - enables BACnet MS/TP, BACnet/IP, Johnson Controls' Metasys N2®, Allen-Bradley® EtherNet/IP, Allen-Bradley® DF1
- ProtoCom-Lon - enables LonWorks®

With the ProtoCom or ProtoCom-Lon your Shark® and Nexus® meter data is available directly to the most widely used BAS protocols worldwide.

Specifications

Power Requirements (Power Supply included)

- Power: 9-30 VDC or 12-24 VAC
- Current draw @ 12V
- ProtoCom: 240 mA
- ProtoCom-Lon: 250 mA

Environmental

- Operating Temperature: -40 °F to 167 °F (-40 °C to 75 °C)
- Relative Humidity: 5-90% RH, non-condensing

Approvals

- LonMark 3.4 Certified – ProtoCom-Lon model
- TUV approved to UL 916 standard and CSA C22-2
- RoHS Compliant
- OPC Self Certified to Compliance
- CE & FCC Approved

BACnet Support

- BACnet COVs
- Supports up to 1,500 Host & Field points
- DIP switches are used to set MAC Address, Node-ID, Baud Rate on the RS485 Field protocol

LonMark Certification on the ProtoCom-Lon

- SPID: 80:00:95:46:00:84:04:07

Metasys® is a registered trademark of Johnson Controls, Inc.

LonWorks® is a registered trademark of Echelon Corp.

BACnet® is a registered trademark of ASHRAE.

Modbus® is a registered trademark of Schneider Electric, licensed to the Modus Organization, Inc.

Shark® and Nexus® are registered trademarks of Electro Industries/GaugeTech.

Allen-Bradley® is a registered trademark of Rockwell Automation, Inc.

